

BYLAW NO. 188/92

A BYLAW CONCERNING THE ERECTION OF HIGHWAY TRAFFIC SIGNS

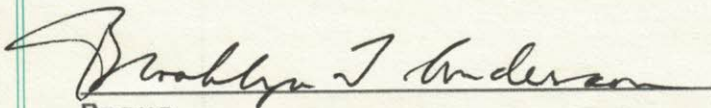
The Council of the Rural Municipality of Indian Head No. 156 in the Province of Saskatchewan, enacts as follows:

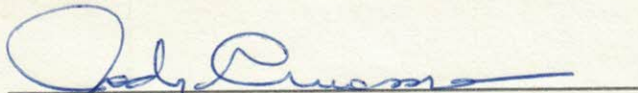
- In this Bylaw the expression "road" means any public highway within the municipality as defined in the Highways and Transportation Act, 1983-84, other than a Provincial Highway as designated pursuant to such Act.
- STOP and YIELD signs shall be erected at the intersection of roadways at the following locations:

| <u>Location of Intersection</u> | <u>Side of Road</u> | <u>Direction From Intersection</u> | <u>Facing Traffic From</u> |
|---|---------------------|------------------------------------|----------------------------|
| STOP SIGNS: | | | |
| 1. NE 21-18-13-W2 south of CP Rail Subway | West | North | North |
| 2. NW 22-18-13-W2 south of CP Rail Subway | East | South | South |
| 3. NW 21-18-13-W2 @ rail crossing | South | West | West |
| 4. SW 28-18-13-W2 @ rail crossing | North | East | East |
| YIELD SIGNS: | | | |
| 3. NE 9-17-11-W2 | South | West | West |
| 4. SW 15-17-11-W2 | North | East | East |
| 5. 576 Ft. North of SW Corner of SW 5-17-12-W2 | East | South | South |
| 6. 1062 Ft. East of NW Corner of NW 7-17-12-W2 | South | West | West |
| 7. NE 9-17-12-W2 | South | West | West |
| 8. 548 Ft. West of SE Corner of SE 18-17-12-W2 | North | East | East |
| 9. 997 Ft. North of SW Corner of SW 18-17-12-W2 | East | South | South |
| 10. NE 21-17-12-W2 | South | West | West |
| 11. SW 30-17-12-W2 | North | East | East |
| 12. NE 35-17-12-W2 | South | West | West |
| 13. NE 24-17-13-W2 | South | West | West |
| 14. NE 32-17-13-W2 | South | West | West |
| 15. NE 36-17-13-W2 | South | West | West |
| 16. 1800 Ft. South of NE Corner of NE 9-18-11-W2 | West | North | North |
| 17. NW 10-18-11-W2 | East | South | South |
| 18. 735 Ft. East of NW Corner of NW 10-18-11-W2 | South | West | West |
| 19. NW 11-18-11-W2 | East | South | South |
| 20. NE 15-18-11-W2 | South | West | West |
| 21. SE 15-18-11-W2 | West | North | North |
| 22. 826 Ft. West of SE Corner of SE 15-18-11-W2 | North | East | East |
| 23. SE 16-18-11-W2 | West | North | North |
| 24. SW 6-18-12-W2 | North | East | East |
| 25. NW 19-18-12-W2 | East | South | South |
| 26. SW 4-18-13-W2 | North | East | East |
| 27. SW 14-18-13-W2 | North | East | East |
| 28. NW 20-18-13-W2 | East | South | South |
| 29. NW 21-18-13-W2 | East | South | South |
| 30. SE 25-18-13-W2 | West | North | North |
| 31. SE 29-18-13-W2 | West | North | North |
| 32. through NE 32-19-12-W2 | East | South | South |

- All signs erected pursuant to Section 2 hereof shall be erected not less than three (3) meters and not more than fifteen (15) meters from the near edge of the intersected roads.

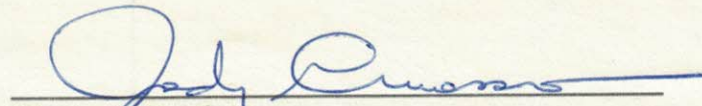
4. The provisions of The Highway Traffic Act shall apply wherever applicable, to every sign erected pursuant to section 2.
5. No person shall alter, damage, remove, deface, knockdown or tamper with any sign erected pursuant to this bylaw.
6. Any person who violates any provision of this bylaw shall be guilty of an offence and shall be liable on summary conviction to the penalties in the General Penalty Bylaw of the Municipality.
7. Bylaw No. 186/92 is hereby repealed.


Reeve


Administrator

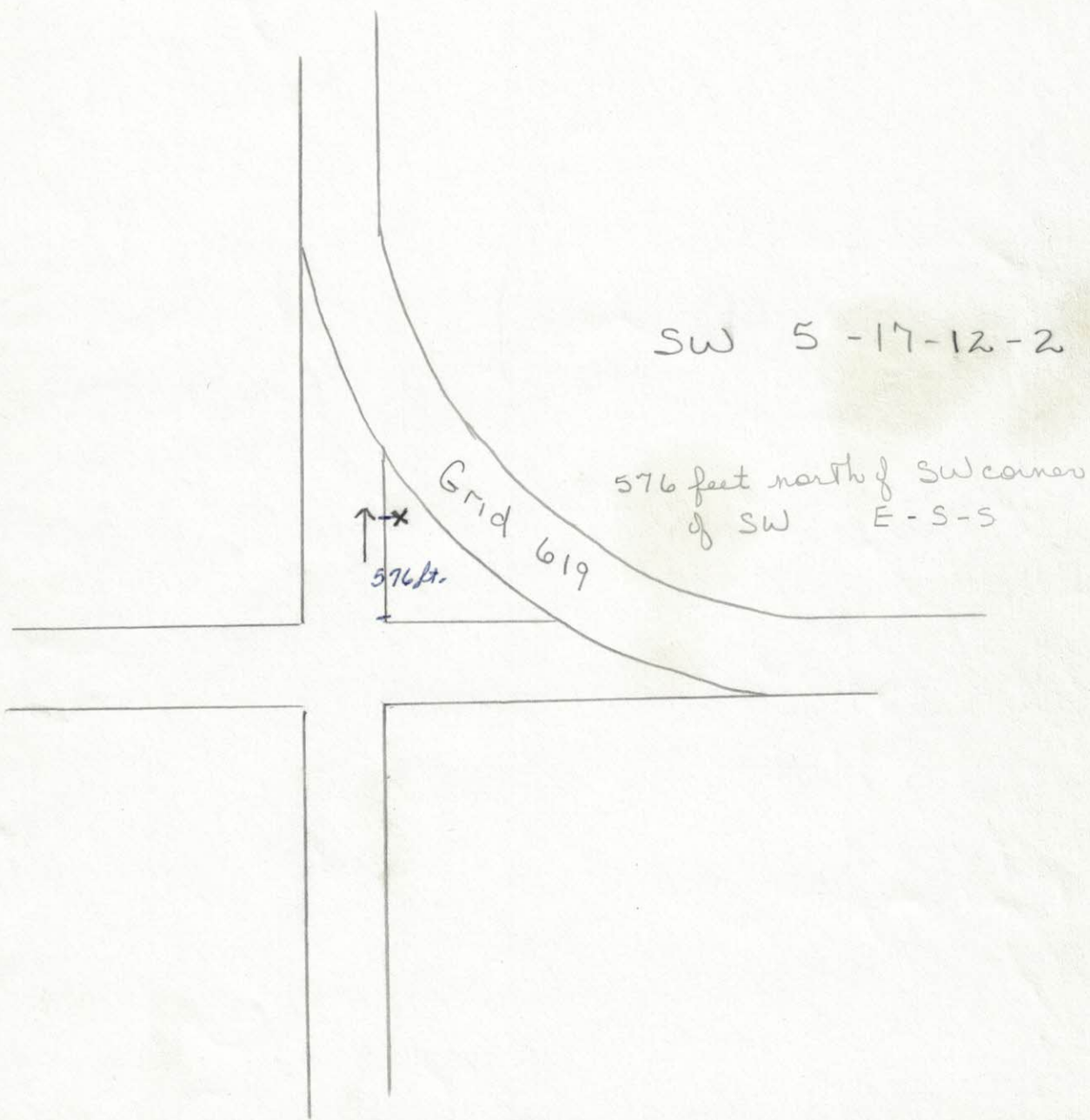


Certified True Copy of Bylaw 188/92
adopted by Council July 14, 1992.

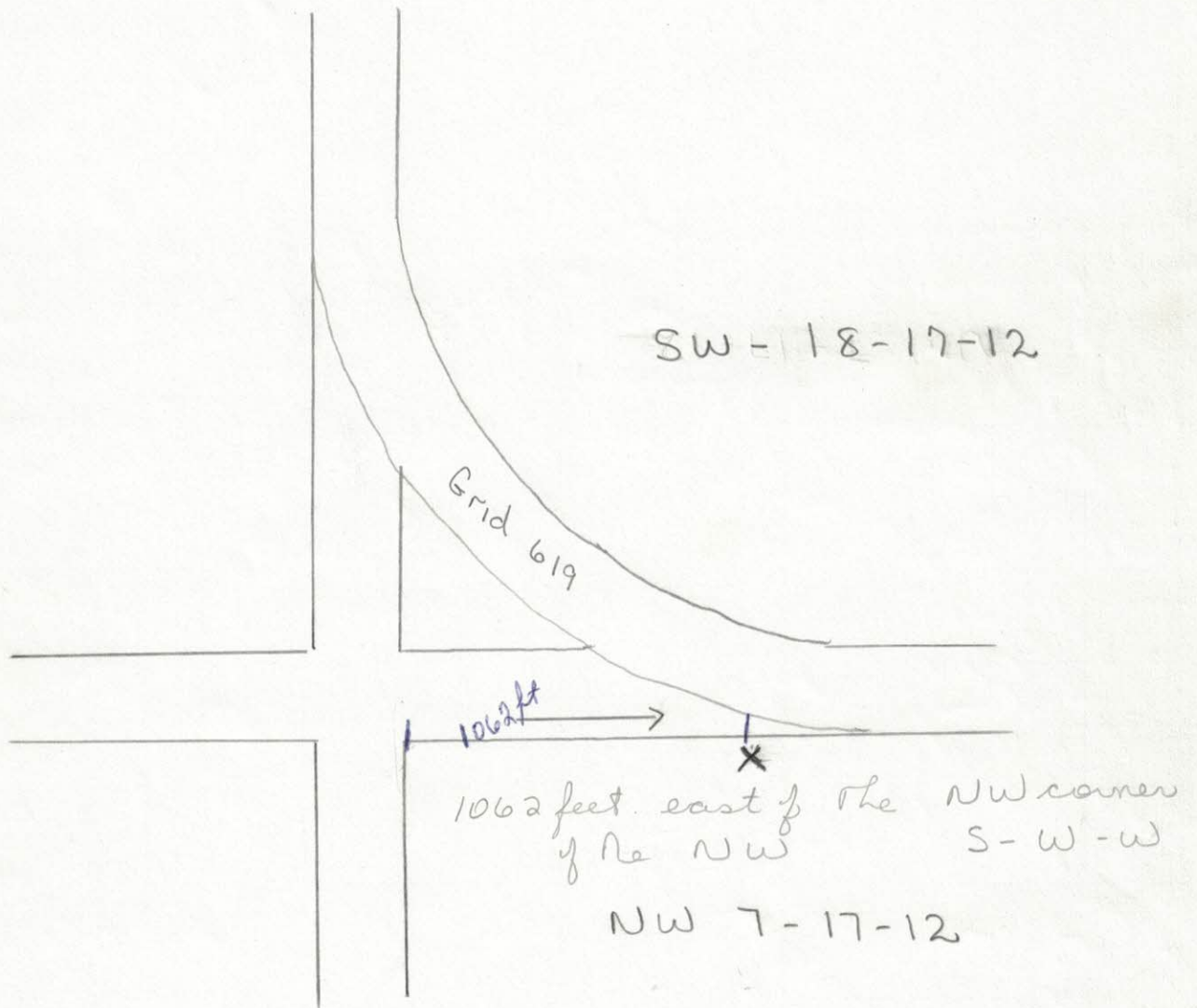

Administrator



Sign No. 3



Sign No. 4



Sign No. 6

N

SE 18-17-12-2

SW 17

← 548ft. →

W

E

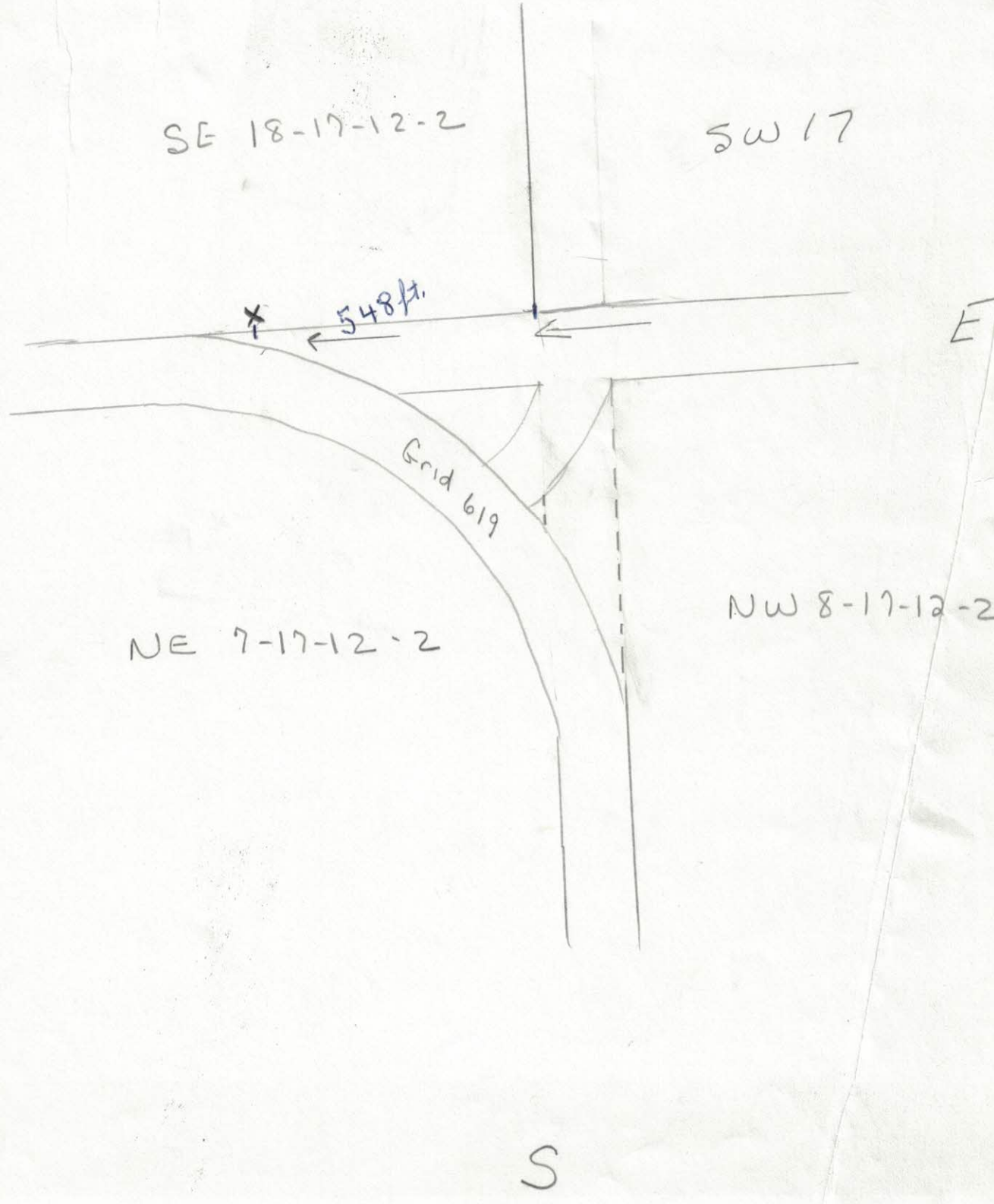
Grid 619

NE 7-17-12-2

NW 8-17-12-2

E

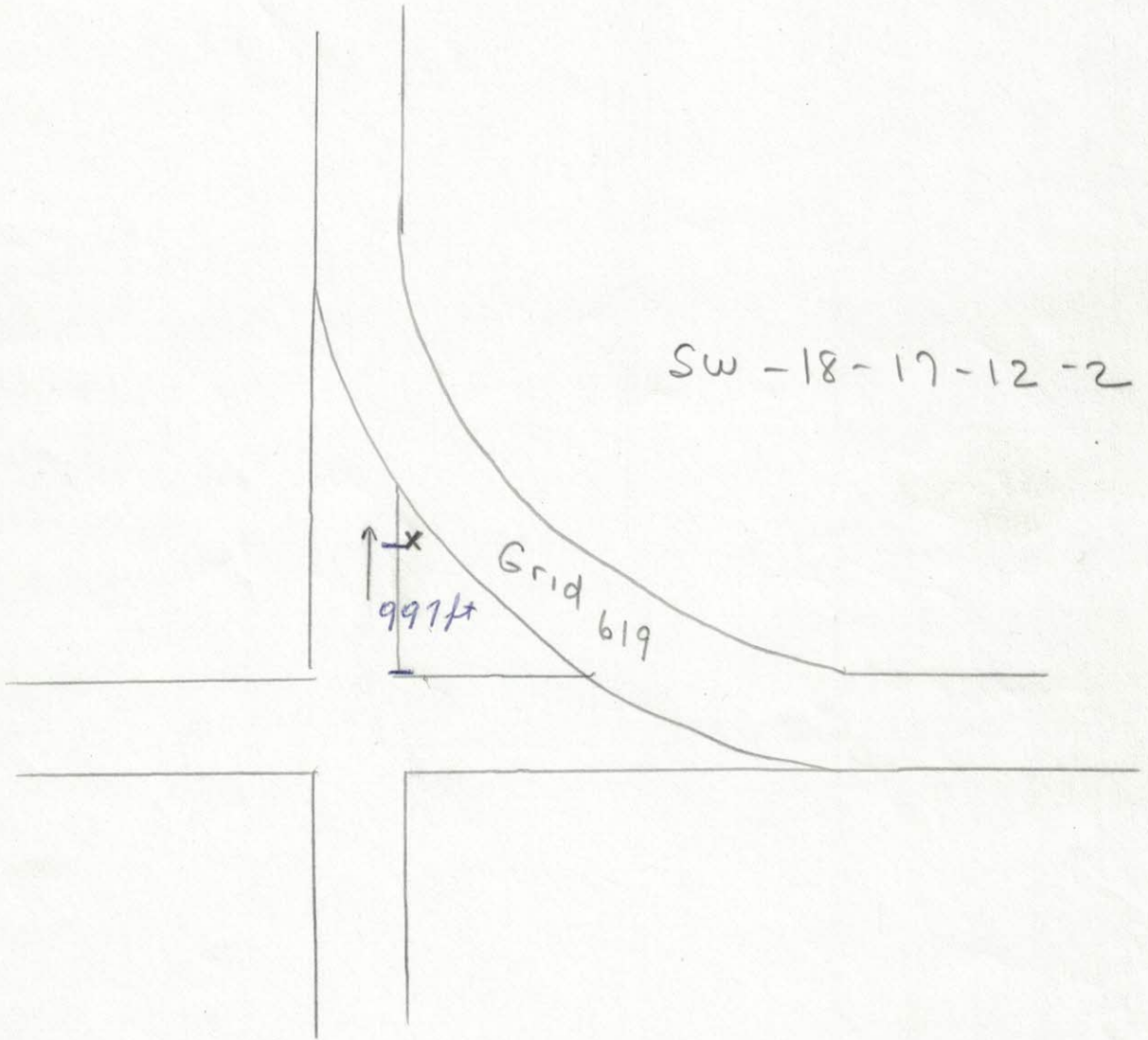
S





1-12-02

Sign No. 7



Sign No. 24



Sign No. 15

Sign No. 15.

SE 16

SW 15

yard site
↓

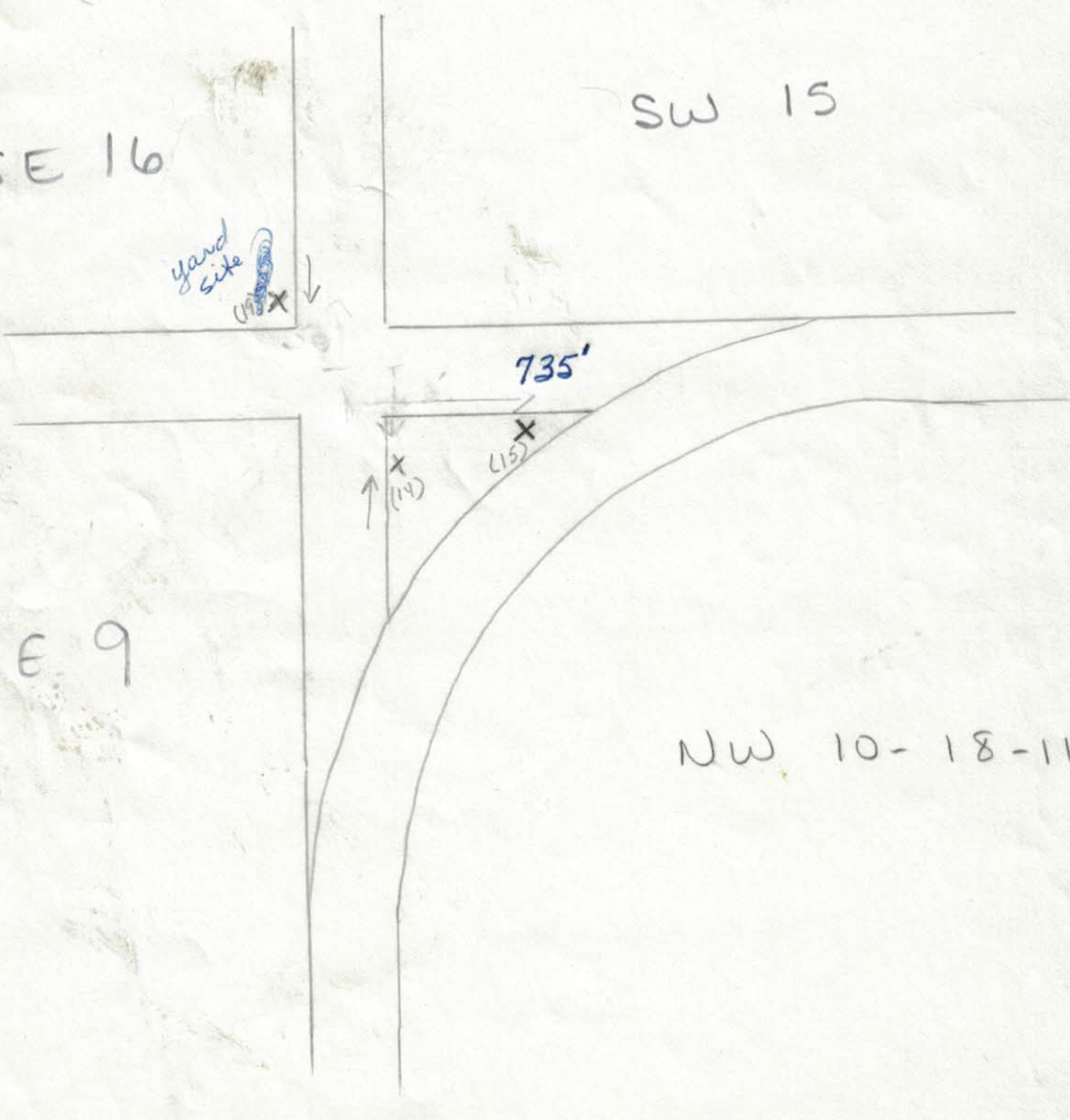
735'

↑
(14)

↓
(15)

NE 9

NW 10-18-11-2





Sign No. 18

